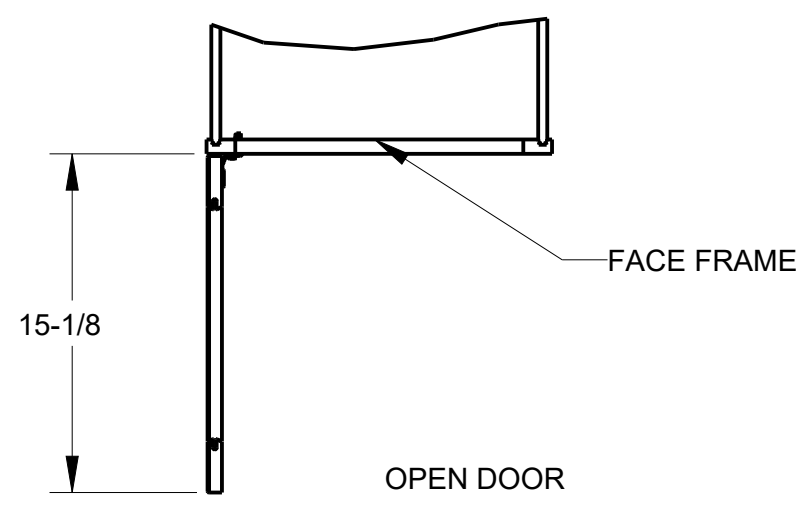
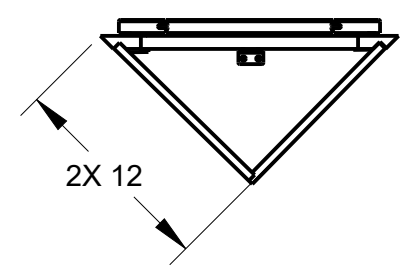
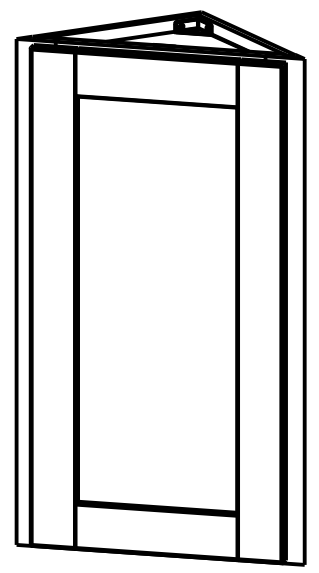
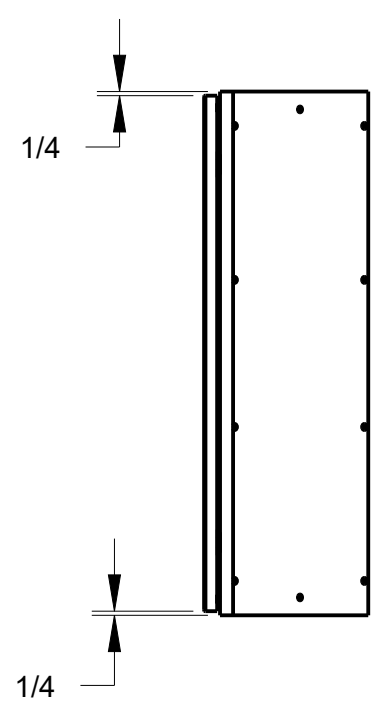
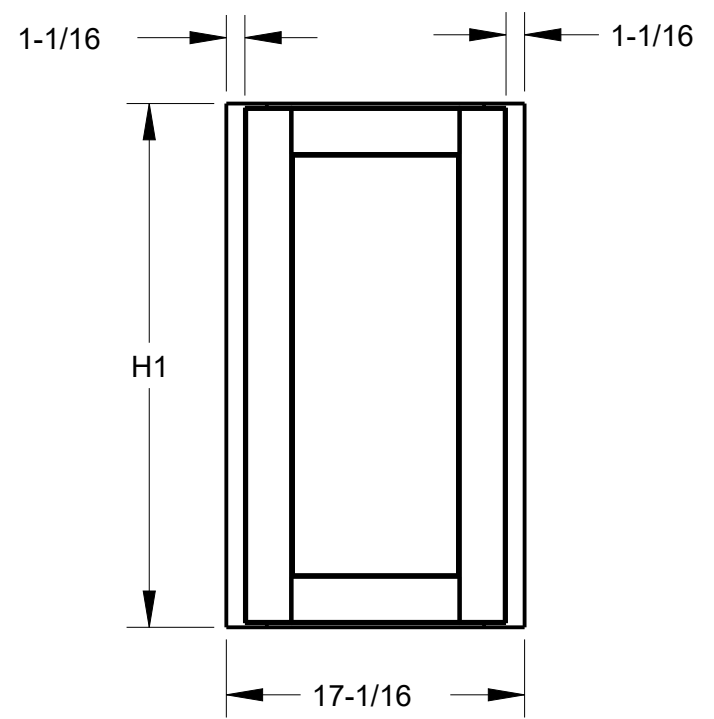


8 7 6 5 4 3 2 1

NOTE:
 1 OPEN DOOR VIEW INCLUDES HINGE SPACE OFFSET.

PRODUCT	H1	DOOR SIZE
		ROUNDED TO THE NEAREST 1/32
WEC1230	30"	14 31/32" X 29 17/32"
WEC1236	36"	14 31/32" X 35 1/2"
WEC1242	42"	14 31/32" X 41 17/32"



THIRD ANGLE PROJECTION	
MATERIAL	FINISH
N/A	N/A
DRAWN BY	DATE
E.GOLESTANYAN	24MAR2020
DESIGNED BY	DATE
NORTHPOINT	
APPROVED BY	DATE
GREG DAVIS	30MAR2020

DESCRIPTION		
WEC1230, WEC1236, WEC1242, FULL OVERLAY		
DRAWING NUMBER		REV
WEC1230-WEC1236-WEC1242_FULL		A
SIZE	SCALE	SHEET
A3	0.091	1 / 1

DOCUMENT STATUS Released

HARDWARE RESOURCES RESERVES THE RIGHT TO CHANGE SPECIFICATIONS WITHOUT NOTICE. IN CASE OF A DISCREPANCY, ACTUAL PART GEOMETRY SUPERSEDES THIS DOCUMENT.

THE INFORMATION CONTAINED WITHIN THIS DRAWING IS THE SOLE PROPERTY OF HARDWARE RESOURCES INC. ANY REPRODUCTION IN PART OR WHOLE WITHOUT WRITTEN PERMISSION OF HARDWARE RESOURCES INC. IS PROHIBITED.

8 7 6 5 4 3 2 1