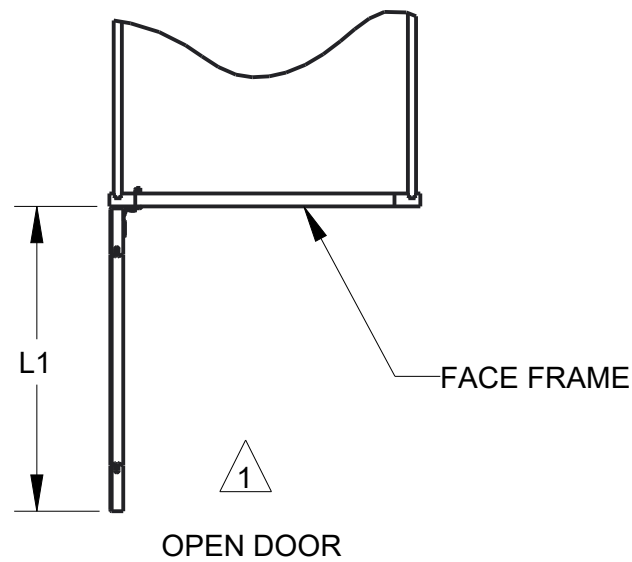
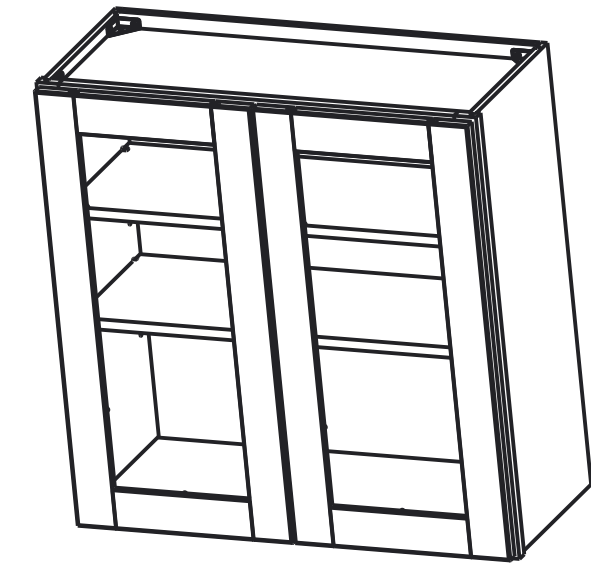
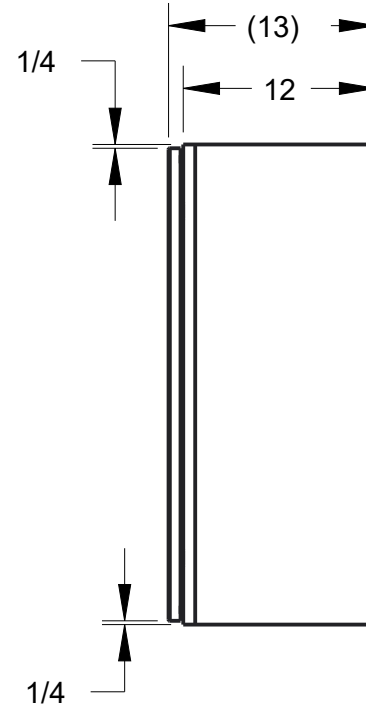
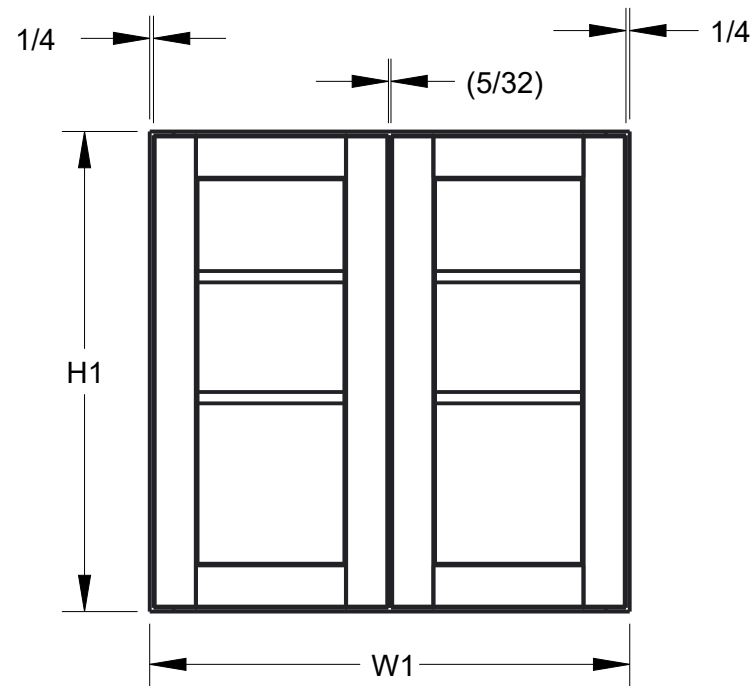


NOTES:

1 OPEN DOOR VIEW INCLUDES HINGE SPACE OFFSET.

PRODUCT	W1	H1	L1	DOOR SIZE
				ROUNDED TO THE NEAREST 1/32
W3030MI	30"	30"	14 13/16"	14 11/16" X 29 17/32"
W3630MI	36"	30"	17 13/16"	17 11/16" X 29 17/32"
W3036MI	30"	36"	14 13/16"	14 11/16" X 35 1/2"
W3636MI	36"	36"	17 13/16"	17 11/16" X 35 1/2"



PRODUCT SHOWN W3030MI

DOCUMENT STATUS Released

HARDWARE RESOURCES RESERVES THE RIGHT TO CHANGE SPECIFICATIONS WITHOUT NOTICE. IN CASE OF A DISCREPANCY, ACTUAL PART GEOMETRY SUPERSEDES THIS DOCUMENT.

THE INFORMATION CONTAINED WITHIN THIS DRAWING IS THE SOLE PROPERTY OF HARDWARE RESOURCES INC. ANY REPRODUCTION IN PART OR WHOLE WITHOUT WRITTEN PERMISSION OF HARDWARE RESOURCES INC. IS PROHIBITED.

THIRD ANGLE PROJECTION 		hardware resources		
MATERIAL N/A	FINISH N/A	DESCRIPTION W3030MI, W3630MI, W3036MI, W3636MI FULL OVERLAY		
DRAWN BY ANDY BROWN	DATE 25MAR2020	DRAWING NUMBER W3030MI-3630-3036-3636_FULL		REV A
DESIGNED BY NORTHPOINT	DATE 26MAR2021	SIZE A3	SCALE 0.100	SHEET 1 / 1